



# WIMBLEDON CHASE PRIMARY SCHOOL

Merton Hall Road  
Wimbledon  
London, SW19 3QB

**T:** +44 (0)20 8542 1413

**E:** [wcps@wimbledonchase.merton.sch.uk](mailto:wcps@wimbledonchase.merton.sch.uk)

**W:** [www.wimbledonchaseschool.co.uk](http://www.wimbledonchaseschool.co.uk)

**Headteacher:** Mr. K. Ellis B.Ed. (Hons.), M.A. (Education)

Friday 6<sup>th</sup> September 2024

Dear Parents,

A very warm welcome to all our children and parents as we begin a new school year! I hope you and your family had a restful and enjoyable summer and I am sure that you and the children are looking forward to an exciting Autumn term. We are especially pleased to welcome all the new families joining Wimbledon Chase this term. We're delighted to have you with us, and I'm confident that the Wimbledon Chase families and children will help you feel at home in no time. Starting at a new school can be daunting, but we hope you settle in smoothly and feel part of our community quickly.



The teachers have thoroughly enjoyed spending time with their new classes, getting to know each child and watching them bond with their classmates. While we've had some typical late-summer surprises with wet weather and the odd thunderstorm, the children have adapted wonderfully to their new routines and the changing weather!

## MEET THE TEACHER

Next week are our **Meet the Teacher meetings** which are being held in the classrooms. Anybody who is unable to make these meetings will be able to see the year group slides on the website afterwards.

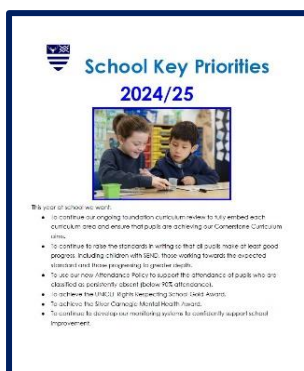
YEAR 1	Monday 9 <sup>th</sup> September	9.00 – 9.30am
YEAR 2	Tuesday 10 <sup>th</sup> September	9.00 – 9.30am
YEAR 3	Wednesday 11 <sup>th</sup> September	9.00 – 9.30am
YEAR 4	Monday 9 <sup>th</sup> September	2.45 – 3.30pm

Transforming lives through education, aspiration and inspiration



YEAR 5	Tuesday 10 <sup>th</sup> September	2.45 – 3.30pm
YEAR 6	Wednesday 11 <sup>th</sup> September	2.45 – 3.30pm
ARK & STUDY	Wednesday 18 <sup>th</sup> September	9.30 - 10.00am
RECEPTION	Wednesday 18 <sup>th</sup> September	9.10 – 10.00am

## SCHOOL KEY PRIORITIES



At Wimbledon Chase, each year we set several **key priorities** from our School Development Plan. These priorities are shared across our entire school community with students, the School Council, parents, governors, and staff, all working together to achieve our goals.

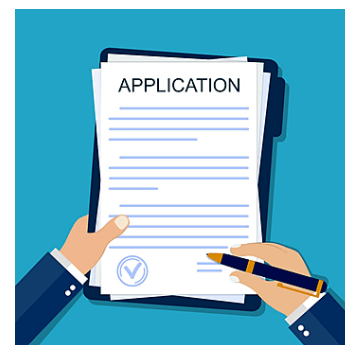
Our priorities this year include acting on the feedback from Ofsted, continuing to support children's writing as well as achieving the Rights Respecting Schools Gold and the Carnegie Mental Health Award (Silver).

[Please follow this link for our School Key Priorities.](#)

## TRANSITION TO SECONDARY SCHOOL

On **Wednesday 18<sup>th</sup> September** at 6.00pm, we will be holding a virtual meeting, particularly for Year 6 parents, who are interested in **transition to secondary school** arrangements.

The link will be sent out on the Parent App nearer the time. The meeting will just share key dates and advice from the borough about the application process. The slides will be available on the school website afterwards for parents unable to attend or for those with older children who have already experienced the process.



## ANNUAL FLU IMMUNISATION

The date for the **Annual Flu Vaccination** is **Wednesday 25<sup>th</sup> September** for pupils in Reception to Year 6. You will shortly be sent a letter from the NHS via the Parent App which asks you to complete a consent form online by Thursday 19<sup>th</sup> September (the link can be found [here](#)).

Please complete the form even if you decide you do not want to vaccinate your child against flu this year.

## OUR CORNERSTONE VALUES



For new families to Wimbledon Chase as well as a refresher for all of the community, our Cornerstone rules along with our [Cornerstones curriculum](#) are central to our ethos at school. Our Cornerstone rules were founded on the work that our Rights Respecting Ambassadors did previously with the pupil community and the values represent how we work at Wimbledon Chase. They are also reflected in our [Positive Relationships and Behaviour Management](#) policy which we published last year.

The children were excellent today in talking about our rules in assembly about belonging.

## NEW TERM REMINDERS - Safeguarding & Site Safety

As a reminder and for the new families that have joined our community, here are our [site entrance and exit arrangements](#) so that the school is as safe as it can be for the children and community.

- The school gates, both at the Merton Hall Road entrance and the Chase Alley entrance are opened at 7.30am and then locked at 9.00am. In the afternoon, the gates open at 3.00pm and close at 4.45pm.
- Parents who use Breakfast Club, should park and then walk children down the driveway to the club (please no driving onto the school site).
- Children should arrive at school promptly for the **8.45am bell**. However, children should not be dropped off at school early and alone as the school cannot accept liability for their safety. **Registration is then at 8.50am**. Children arriving after this time should sign in at the school office.
- All families should remember to only enter the school through the main office entrance and only via the Merton Hall Road entrance after 9.00am and before the gates open again at 3.00pm.
- At the end of the day, families should leave the school premises in a timely fashion - a bell is rung at 3.50pm to remind families to vacate the premises.

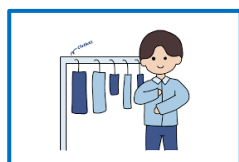


- Children are not allowed on the school play equipment before or after school as the equipment is for use only during the school day or for the after school club only. Younger children should stay with their parents whilst waiting for older siblings to come out of school.
- Children and adults should not ride bikes or scooters in the school grounds at any time.
- Now that the children are used to their new lining up positions, please can parents remain back from the class drop off points and at pick up.
- Parents who are picking up children from Wimbledon Chase Club should do this via the Chase Alley gate; this is in order to keep the site as secure as possible.

Thank you for your support in this.

## NEW TERM REMINDERS – Clubs, School Uniform

**Clubs** are due to start the week of the 16<sup>th</sup> September, including the different sporting clubs (please check start dates on each provider's fliers on the school website). On a child's club day children should bring their sports kit in a bag to school and get changed when they get to the club (unless it is their PE day) and wear their school uniform as normal during the day.



We would like to remind parents the importance of **naming their children's uniform** (including class if possible). Every year a lot of unnamed uniform items remain unclaimed. We are very conscious of the expense of purchasing a uniform and we make every effort to reunite items with their owners. Unclaimed items are reused or donated, if their condition allows, so please do check if all uniform is named (including any bags and coats worn to school).

The children looked splendid and smart in their uniforms this week and wore them with pride. Please note that children should wear **sensible black shoes** to school - this does not include black trainers. Please contact your child's class teacher or Mrs Dotchin if your child has a specific reason that they are unable to wear school shoes.

### Pre-loved Uniform Sale

You may have noticed the uniform sale after school today. We will be having regular opportunities for parents to purchase uniform as children suddenly grow! All staple pre-loved uniform items continue to be sold for the amazing price of £1 per item.

## THINGS TO LOOK FORWARD TO



There are many things to look forward to this term - we have put some dates on the website [here](#) as well as on the Parent App. Keep your eye out for information on our Autumn Community Day in October as well as the different trips that the year groups are organising - the year group newsletters will be sent out to you next week.

Teachers will often ask for parent volunteers for help in class or on trips. Regular volunteers will need to have a police check (called a DBS) organised through the school. If you do become a regular volunteer then Mrs Broom in the School Office can give you the relevant information.

There are parent meetings for children with IESPs on **Wednesday 16<sup>th</sup> October** and Parent Consultation Meetings on **Wednesday 23<sup>rd</sup> and Thursday 24<sup>th</sup> October**.

## FINALLY



We are very proud in being awarded our **Eco-Schools Green Flag Award – with distinction**, again this year. The Eco Reps (along with Ms Read) and the whole school have enthusiastically and passionately embraced achieving our **targets** of saving energy, reducing waste and increasing recycling and finding out about marine and plastics. There will be new targets for this year that I am sure that the Eco Reps will share with you.

It is always lovely to hear from former pupils to find out what they have been up to. A former pupil **Efan MacMillan** contacted us to share his football coaching experience (with Luton Town FC) as well as what he has been doing since leaving the school. He now runs football coaching sessions with 4 to 10 year olds; if you are interested then you can contact him through the details on his poster.



We were also contacted by another former Chase family this week telling us all about former pupil **Annabelle Colman**. Annabelle's family are Australian, but **Annabelle** attended the school in the Study before returning to Australia. The family wanted us to know that Annabelle loved her time at Chase and had a particular passion for running which she continued with, leading to her being selected for the **Australian Paralympics team** in the 1500 metres in Paris! Her race was today and she achieved fourth place. This is fantastic to hear and was inspirational to the children in assembly today.

Have a lovely weekend

Best wishes

Mr. K. Ellis  
**Headteacher**

<b>A</b> Rights are for ALL children. <b>UNIVERSAL</b>	<b>B</b> Rights are there at BIRTH. <b>INHERENT</b>	<b>C</b> Rights CANNOT be taken away. <b>INALIENABLE</b>	<b>D</b> Rights DO NOT have to be earned. <b>UNCONDITIONAL</b>	<b>E</b> All rights are EQUALLY important. <b>INDIVISIBLE</b>
---	--	---	---	--