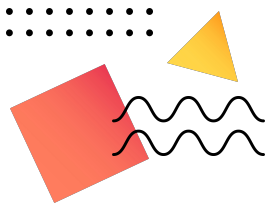


Presentation for Prospective Parents



Wimbledon Chase Primary School





Overview of Presentation

- Values
- Cornerstone Curriculum
- Nursery and Reception curriculum
- Facilities
- Any questions



At Wimbledon Chase we are...



kind



inclusive



safe



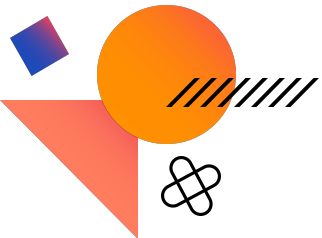
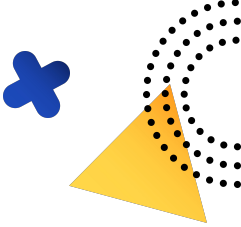
respectful



equal



positive



Character

Knowledge of self



Cognition

Knowledge of learning



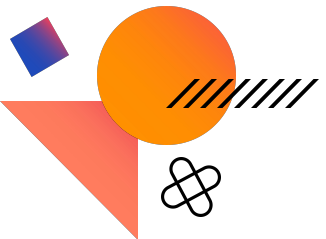
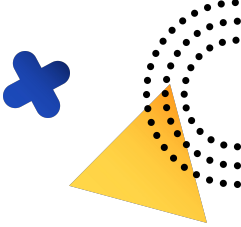
Collaboration

Knowledge of ourselves and others



Community

Knowledge of wider society





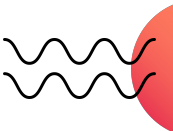
Cognition

Knowledge of learning



- Be creative problem solvers
 - Be critical thinkers
- Be inquisitive risk takers
 - Be reflective and resourceful learners
- Assimilate life skills

- Curriculum
EYFS, KS1, KS2, ARP, SATs
- Specialist teachers
languages
sport
music

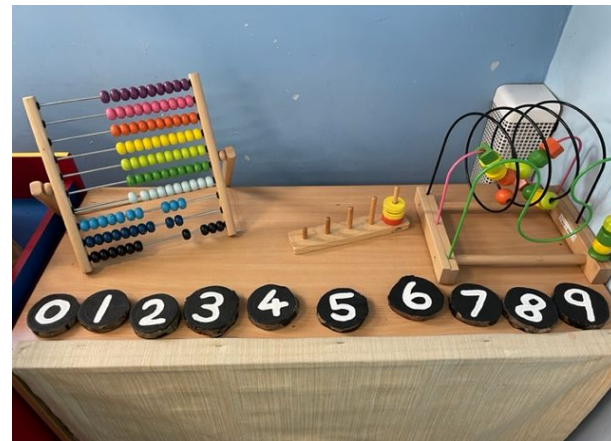


Nursery Learning Environment

30 hour provision 8.30am to 3.30pm

15 hours provision 8.30am to 11.30am **or** 12.30pm - 3.30pm

<https://www.wimbledonchaseschool.co.uk/key-information/admissions/>



2 Nursery classes. Maximum 26 children in each class. Nursery Lead teacher, EY Practitioners, Teaching Assistant, Learning Support Assistant, Specialist Language Support Assistant.



Nursery and Reception Curriculum

Prime Areas : Personal, Social and Emotional Development, Communication and Language and Physical Development

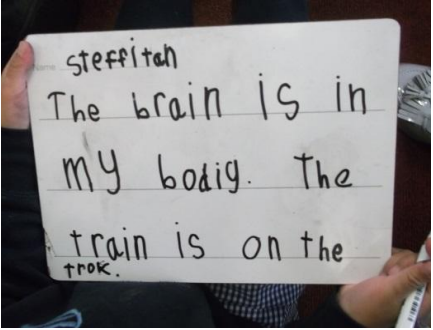


[Further Information for Prospective Parents](#)

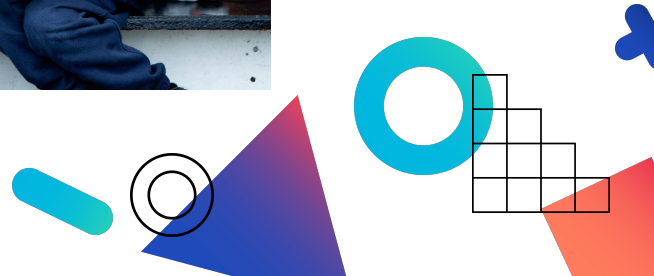




Specific Areas: Literacy, Maths, Understanding of the World, Expressive Arts and Design

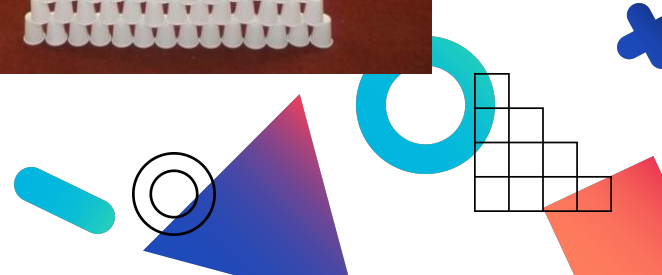


Literacy





Maths





Understanding of the World, Expressive Arts and Design





Cognition

Knowledge of learning



- Be creative problem solvers
 - Be critical thinkers
- Be inquisitive risk takers
 - Be reflective and resourceful learners
- Assimilate life skills

Fast Graspers: Challenge and greater depth learning

Keep up sessions: EAL, Language and Communication Support, Motor skills, Social Interaction Group, Sensory Needs, Phonics

Parent Teacher Consultations






Collaboration

Knowledge of ourselves and others



- Build empathetic and reciprocal relationships
 - Be confident communicators
 - Know how to operate effectively as part of a team and support learning
 - Understand and value equality and justice

Lunchtime

- Separate dining hall
 - Choice of school lunches or packed lunch
 - From Reception to Year 6 all children entitled to free school lunches
 - Food forum
- 



Character

Knowledge of self

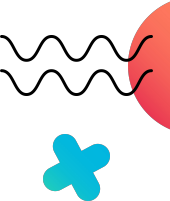


- Hold a positive self image
- Have a zest for life

Embrace Challenge and show resilience

- Be effective self-advocates
- Know how to be mentally and physically healthy and safe

- Zones of Regulation
- Relationship and Behaviour Policy
- Mental and Physical health





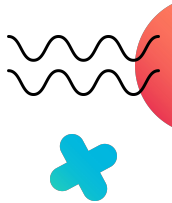
Community

Knowledge of wider society



- Have a wide cultural appreciation
 - Have a global and environmental awareness
- Be democratically minded
 - Embrace diversity, equality and inclusivity

- Diverse community
- Rights Respecting School
- Friends, Class Reps, parent volunteers
- Links with wider community
- Environmental awareness





Collaboration

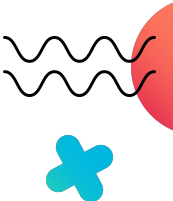
Knowledge of ourselves and others



- Build empathetic and reciprocal relationships
 - Be confident communicators
 - Know how to operate effectively as part of a team and support learning
 - Understand and value equality and justice



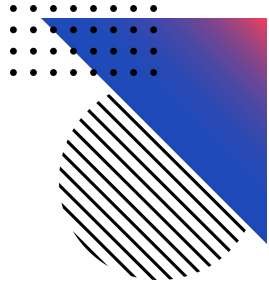
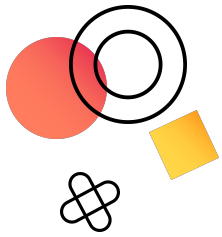
- Houses
- Leadership opportunities for pupils
- School trips
- Clubs



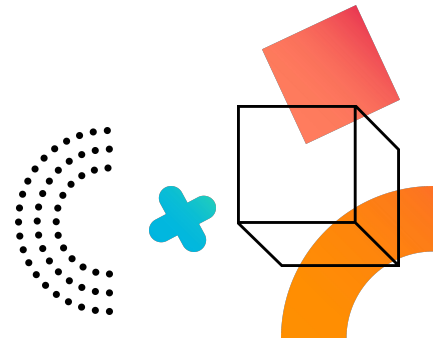
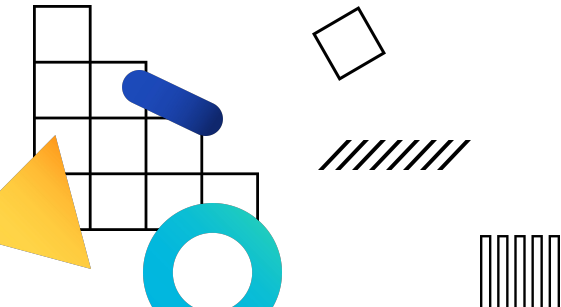


- Wrap around care
- Secondary schools
- Catchment area





Thank you for coming






								Offered			
Wimbledon Chase	90	444	0	<5	0	0	34 (APA)	568.01 (APA)	628.17 (APA)	718.5 (APA)	




School	No. Places	No. on time apps rec'd	EHCP	LAC	Med/ Soc	Staff	Sib	Furthest distance 19/4/2022 (m)	Furthest distance second round (m)	Furthest distance 1/9/2022 (m)
Wimbledon Chase	90	444	0	<5	0	0	34 (APA)	568.01 (APA)	628.17 (APA)	718.5 (APA)